

ARMAND NICOLET
TRAMELAN

COLLECTION
2022-C



ARMAND NICOLET
TRAMELAN



INDEX

CONTEMPORARY COLLECTION



M03 - TREASURE

DATE 8
QUARTZ MOON PHASE 15



JS9-41 - ACQUA 41

DATE 45
GMT 50



J09 - DOWNTOWN

DATE 25
GMT 31
CHRONOGRAPH 37



JS9-44 - ACQUA 44

DATE 56
GMT 61

CONTEMPORARY COLLECTION



M02 - DESIGN

DATE	67
GMT	72
CHRONOGRAPH	77



AL3 - WOMAN TOUCH

CHRONOGRAPH	95
-------------	----



MM2 - URBAN

DATE	84
CHRONOGRAPH	89



VS1

DATE	99
GMT	104
CHRONOGRAPH	109



CONTEMPORARY
COLLECTION



M03
Treasure
DATE

M03 DATE

Mechanical, automatic with a power reserve of 38 hours
Calibre Date AN200 (based on SW-200 modified per
Armand Nicolet's specifications)

Guilloché decorated dial inserted with Mother of Pearl and
applied indexes and diamond cut dots and hands.
Sapphire crystal with inside antiglare treatment
and sapphire crystal on see-through screwed back

TECHNICAL SPECIFICATIONS :

- Case and Buckle: Stainless steel 316L
 - Stainless steel 316L set with 12 Diamonds
 - Stainless steel 316L set with 54 Diamonds
- Water Resistance: 10 ATM - 330 feet
- Diameter: 34 mm
- Thickness: 11,25 mm

STRAPS AVAILABLE :

- 18 mm alligator-embossed calf strap with stainless steel deployment buckle
- Stainless steel 316L bracelet



WRIST CIRCUMFERENCE

Metal: Min 145mm - Max 200mm
Alligator leather: Min 115 - Max 185

M03 DATE



A151BAA-AV-P882VR8

CASE

- Stainless steel 316L

DIAL

- Silvered Guilloché and Green MOP

STRAP

- Green Leather



A151BAA-AK-P882LV8

CASE

- Stainless Steel 316L

DIAL

- Silvered Guilloché and Blue MOP

STRAP

- Lavender Leather



A151BAA-AN-P882BC8

CASE

- Stainless Steel 316L

DIAL

- Silvered Guilloché and White MOP

STRAP

- White Leather

M03 DATE



A151EAA-AV-P882VR8

CASE

- Stainless steel 316L set with 12 diamonds

DIAL

- Silvered Guilloché and Green MOP

STRAP

- Green Leather



A151EAA-AK-P882LV8

CASE

- Stainless steel 316L set with 12 diamonds

DIAL

- Silvered Guilloché and Blue MOP

STRAP

- Lavender Leather



A151EAA-AN-P882BC8

CASE

- Stainless steel 316L set with 12 diamonds

DIAL

- Silvered Guilloché and White MOP

STRAP

- White Leather

M03 DATE



A151FAA-AV-P882VR8

CASE

- Stainless steel 316L set with 54 diamonds

DIAL

- Silvered Guilloché and Green MOP

STRAP

- Green Leather



A151FAA-AK-P882LV8

CASE

- Stainless Steel 316L set with 54 diamonds

DIAL

- Silvered Guilloché and Blue MOP

STRAP

- Lavender Leather



A151FAA-AN-P882BC8

CASE

- Stainless Steel 316L set with 54 diamonds

DIAL

- Silvered Guilloché and White MOP

STRAP

- White Leather

M03 DATE



A151BAA-AV-MA150

CASE

- Stainless steel 316L

DIAL

- Silvered Guilloché and Green MOP

STRAP

- Stainless Steel 316L



A151BAA-AK-MA150

CASE

- Stainless Steel 316L

DIAL

- Silvered Guilloché and Blue MOP

STRAP

- Stainless Steel 316L



A151BAA-AN-MA150

CASE

- Stainless steel 316L

DIAL

- Silvered Guilloché and White MOP

STRAP

- Stainless steel 316L

M03 DATE



A151EAA-AV-MA150

CASE

- Stainless steel 316L set with 12 diamonds

DIAL

- Silvered Guilloché and Green MOP

STRAP

- Stainless Steel 316L



A151EAA-AK-MA150

CASE

- Stainless Steel 316L set with 12 diamonds

DIAL

- Silvered Guilloché and Blue MOP

STRAP

- Stainless Steel 316L



A151EAA-AN-MA150

CASE

- Stainless steel 316L set with 12 diamonds

DIAL

- Silvered Guilloché and White MOP

STRAP

- Stainless steel 316L

M03 DATE



A151FAA-AV-MA150

CASE

- Stainless steel 316L set with 54 diamonds

DIAL

- Silvered Guilloché and Green MOP

STRAP

- Stainless Steel 316L



A151FAA-AK-MA150

CASE

- Stainless Steel 316L set with 54 diamonds

DIAL

- Silvered Guilloché and Blue MOP

STRAP

- Stainless Steel 316L



A151FAA-AN-MA150

CASE

- Stainless steel 316L set with 54 diamonds

DIAL

- Silvered Guilloché and White MOP

STRAP

- Stainless steel 316L



M03
Treasure
MOON PHASE

M03 MOON PHASE

Quartz Moon phase Ronda 708

Guilloché decorated dial inserted with Mother of Pearl and applied indexes and diamond cut dots and hands.

Sapphire crystal with inside antiglare treatment and sapphire crystal on screwed back

TECHNICAL SPECIFICATIONS :

- Case and Buckle: Stainless steel 316L
 - Stainless steel 316L set with 12 Diamonds
 - Stainless steel 316L set with 54 Diamonds
- Water Resistance: 10 ATM - 330 feet
- Diameter: 34 mm
- Thickness: 11,25 mm

STRAPS AVAILABLE :

- 18 mm alligator-embossed calf strap with stainless steel deployment buckle
- Stainless steel 316L bracelet



WRIST CIRCUMFERENCE

Metal: Min 145mm - Max 200mm
Alligator leather: Min 115 - Max 185

M03 MOON PHASE



A151QAA-AV-P882VR8

CASE
 • Stainless steel 316L

DIAL
 • Silvered Guilloché and Green MOP

STRAP
 • Green Leather



A151QAA-AK-P882LV8

CASE
 • Stainless steel 316L

DIAL
 • Silvered Guilloché and Blue MOP

STRAP
 • Lavender Leather



A151QAA-AN-P882BC8

CASE
 • Stainless steel 316L

DIAL
 • Silvered Guilloché and White MOP

STRAP
 • White Leather



A151QAA-GN-P882GR8

CASE
 • Stainless steel 316L

DIAL
 • Silvered Guilloché and Grey MOP

STRAP
 • Grey Leather



A151QAA-AU-P882AU8

CASE
 • Stainless steel 316L

DIAL
 • Silvered Guilloché and Dark Blue MOP

STRAP
 • Dark Blue Leather

M03 MOON PHASE



A151RAA-AV-P882VR8

CASE

- Stainless steel 316L set with 12 diamonds

DIAL

- Silvered Guilloché and Green MOP

STRAP

- Green Leather



A151RAA-AK-P882LV8

CASE

- Stainless steel 316L set with 12 diamonds

DIAL

- Silvered Guilloché and Blue MOP

STRAP

- Lavender Leather



A151RAA-AN-P882BC8

CASE

- Stainless steel 316L set with 12 diamonds

DIAL

- Silvered Guilloché and White MOP

STRAP

- White Leather



A151RAA-GN-P882GR8

CASE

- Stainless steel 316L set with 12 diamonds

DIAL

- Silvered Guilloché and Grey MOP

STRAP

- Grey Leather



A151RAA-AU-P882AU8

CASE

- Stainless steel 316L set with 12 diamonds

DIAL

- Silvered Guilloché and Dark Blue MOP

STRAP

- Dark Blue Leather

M03 MOON PHASE



A151TAA-AV-P882VR8

CASE

- Stainless steel 316L set with 54 diamonds

DIAL

- Silvered Guilloché and Green MOP

STRAP

- Green Leather



A151TAA-AK-P882LV8

CASE

- Stainless steel 316L set with 54 diamonds

DIAL

- Silvered Guilloché and Blue MOP

STRAP

- Lavender Leather



A151TAA-AN-P882BC8

CASE

- Stainless steel 316L set with 54 diamonds

DIAL

- Silvered Guilloché and White MOP

STRAP

- White Leather



A151TAA-GN-P882GR8

CASE

- Stainless steel 316L set with 54 diamonds

DIAL

- Silvered Guilloché and Grey MOP

STRAP

- Grey Leather



A151TAA-AU-P882AU8

CASE

- Stainless steel 316L set with 54 diamonds

DIAL

- Silvered Guilloché and Dark Blue MOP

STRAP

- Dark Blue Leather

M03 MOON PHASE



A151QAA-AV-MA150

CASE

- Stainless steel 316L

DIAL

- Silvered Guilloché and Green MOP

STRAP

- Stainless steel 316L



A151QAA-AK-MA150

CASE

- Stainless steel 316L

DIAL

- Silvered Guilloché and Blue MOP

STRAP

- Stainless steel 316L



A151QAA-AN-MA150

CASE

- Stainless steel 316L

DIAL

- Silvered Guilloché and White MOP

STRAP

- Stainless steel 316L



A151QAA-GN-MA150

CASE

- Stainless steel 316L

DIAL

- Silvered Guilloché and Grey MOP

STRAP

- Stainless steel 316L



A151QAA-AU-MA150

CASE

- Stainless steel 316L

DIAL

- Silvered Guilloché and Dark Blue MOP

STRAP

- Stainless steel 316L

M03 MOON PHASE



A151RAA-AV-MA150

CASE

- Stainless steel 316L set with 12 diamonds

DIAL

- Silvered Guilloché and Green MOP

STRAP

- Stainless steel 316L



A151RAA-AK-MA150

CASE

- Stainless steel 316L set with 12 diamonds

DIAL

- Silvered Guilloché and Blue MOP

STRAP

- Stainless steel 316L



A151RAA-AN-MA150

CASE

- Stainless steel 316L set with 12 diamonds

DIAL

- Silvered Guilloché and White MOP

STRAP

- Stainless steel 316L



A151RAA-GN-MA150

CASE

- Stainless steel 316L set with 12 diamonds

DIAL

- Silvered Guilloché and Grey MOP

STRAP

- Stainless steel 316L



A151RAA-AU-MA150

CASE

- Stainless steel 316L set with 12 diamonds

DIAL

- Silvered Guilloché and Dark Blue MOP

STRAP

- Stainless steel 316L

M03 MOON PHASE



A151TAA-AV-MA150

CASE

- Stainless steel 316L set with 54 diamonds

DIAL

- Silvered Guilloché and Green MOP

STRAP

- Stainless steel 316L



A151TAA-AK-MA150

CASE

- Stainless steel 316L set with 54 diamonds

DIAL

- Silvered Guilloché and Blue MOP

STRAP

- Stainless steel 316L



A151TAA-AN-MA150

CASE

- Stainless steel 316L set with 54 diamonds

DIAL

- Silvered Guilloché and White MOP

STRAP

- Stainless steel 316L



A151TAA-GN-MA150

CASE

- Stainless steel 316L set with 54 diamonds

DIAL

- Silvered Guilloché and Grey MOP

STRAP

- Stainless steel 316L



A151TAA-AU-MA150

CASE

- Stainless steel 316L set with 54 diamonds

DIAL

- Silvered Guilloché and Dark Blue MOP

STRAP

- Stainless steel 316L

M03 STRAPS



PC882BC8+BX15-9742

18mm White Alligator-embossed calf strap with stainless steel deployment buckle



P882LV8+BX15-9742

18mm Lavender Alligator-embossed calf strap with stainless steel deployment buckle



P882NR8+BX15-9742

18mm Black Alligator-embossed calf strap with stainless steel deployment buckle



P882RS8+BX15-9742

18mm Pink Alligator-embossed calf strap with stainless steel deployment buckle

M03 STRAPS



P882AU8+BX15-9742

18mm Dark Blue Alligator-embossed calf strap with stainless steel deployment buckle



P882VR8+BX15-9742

18mm Green Alligator-embossed calf strap with stainless steel deployment buckle



MA150

18cm Stainless Steel Bracelet



BX18-9742

Deployment buckle

J09 Downtown DATE



J09 DATE

Mechanical, automatic with a power reserve of 38 hours
Calibre Date AN200 (based on SW-200 modified per
Armand Nicolet's specifications)

Guilloché dial with luminous applied indexes and hands.
Case with antiglare treated sapphire crystal on top and
sapphire crystal in the see-through screwed back.

TECHNICAL SPECIFICATIONS :

- Case and Buckle: Stainless Steel 316L
- Water Resistance: 5 ATM
- Diameter: 41 mm
- Thickness: 12 mm

VERSIONS :

- Stainless Steel 316L,

STRAPS & BRACELETS AVAILABLE :

- 24 mm blue or black rubber band with stainless steel 316L deployment buckle
- 24 mm brown, black or camel tone calf leather stainless steel 316L tang buckle
- 24 mm stainless steel 316L bracelet



WRIST CIRCUMFERENCE

Metal: Min 140mm - Max 215mm
Rubber: Min 175mm - Max 220mm
Leather: Min 165mm - Max 220mm

J09 DATE



A660AAA-AG-PK4140TM

CASE

- Stainless Steel 316L

DIAL

- Silvered

STRAP

- Brown Vintage Calf



A660AAA-AG-GG4710N

CASE

- Stainless Steel 316L

DIAL

- Silvered

STRAP

- Black Rubber



A660AAA-AG-MA4660AA

CASE

- Stainless Steel 316L

DIAL

- Silvered

STRAP

- Stainless Steel 316L

J09 DATE



A660AAA-BU-PK4140CA

CASE

- Stainless Steel 316L

DIAL

- Blue

STRAP

- Camel Tone Vintage Calf



A660AAA-BU-GG4710U

CASE

- Stainless Steel 316L

DIAL

- Blue

STRAP

- Blue Rubber



A660AAA-BU-MA4660AA

CASE

- Stainless Steel 316L

DIAL

- Blue

STRAP

- Stainless Steel 316L

J09 DATE



A660AAA-GR-PK4140TM

CASE

- Stainless Steel 316L

DIAL

- Grey

STRAP

- Brown Vintage Calf



A660AAA-GR-GG4710N

CASE

- Stainless Steel 316L

DIAL

- Grey

STRAP

- Black Rubber



A660AAA-GR-MA4660AA

CASE

- Stainless Steel 316L

DIAL

- Grey

STRAP

- Stainless Steel 316L

J09 DATE



A660AAA-NR-PK4140NR

CASE

- Stainless Steel 316L

DIAL

- Black

STRAP

- Black Vintage Calf



A660AAA-NR-GG4710N

CASE

- Stainless Steel 316L

DIAL

- Black

STRAP

- Black Rubber



A660AAA-NR-MA4660AA

CASE

- Stainless Steel 316L

DIAL

- Black

STRAP

- Stainless Steel 316L



J09
Downtown
GMT

J09 GMT

Mechanical, automatic with a power reserve of 50 hours
Calibre GMT AN330 (based on SW-330 modified per
Armand Nicolet's specifications)
Guilloché dial with luminous applied indexes and hands.
Case with antiglare treated sapphire crystal on top and
sapphire crystal in the see-through screwed back.

TECHNICAL SPECIFICATIONS :

- Case and Buckle: Stainless Steel 316L
- Water Resistance: 5 ATM
- Diameter: 41 mm
- Thickness: 12 mm

VERSIONS :

- Stainless Steel 316L,

STRAPS & BRACELETS AVAILABLE :

- 24 mm blue or black rubber band with stainless steel 316L deployment buckle
- 24 mm brown, black or camel tone vintage calf leather stainless steel 316L, tang buckle
- 24 mm stainless steel 316L, bracelet



WRIST CIRCUMFERENCE

Metal: Min 140mm - Max 215mm
Rubber: Min 175mm - Max 220mm
Leather: Min 165mm - Max 220mm

J09 GMT



A663AAA-AG-PK4140TM

CASE

- Stainless Steel 316L

DIAL

- Silvered

STRAP

- Brown Vintage Calf



A663AAA-AG-GG4710N

CASE

- Stainless Steel 316L

DIAL

- Silvered

STRAP

- Black Rubber



A663AAA-AG-MA4660A

CASE

- Stainless Steel 316L

DIAL

- Silvered

STRAP

- Stainless Steel 316L

J09 GMT



A663AAA-BU-PK4140CA

CASE

- Stainless Steel 316L

DIAL

- Blue

STRAP

- Camel Tone Vintage Calf



A663AAA-BU-GG4710U.

CASE

- Stainless Steel 316L

DIAL

- Blue

STRAP

- Blue Rubber



A663AAA-BU-MA4660A

CASE

- Stainless Steel 316L

DIAL

- Blue

STRAP

- Stainless Steel 316L

J09 GMT



A663AAA-GR-PK4140TM

CASE

- Stainless Steel 316L

DIAL

- Grey

STRAP

- Brown Vintage Calf



A663AAA-GR-GG4710N

CASE

- Stainless Steel 316L

DIAL

- Grey

STRAP

- Black Rubber



A663AAA-GR-MA4660A

CASE

- Stainless Steel 316L

DIAL

- Grey

STRAP

- Stainless Steel 316L

J09 GMT



A663AAA-NR-PK4140NR

CASE

- Stainless Steel 316L

DIAL

- Black

STRAP

- Black Vintage Calf



A663AAA-NR-GG4710N

CASE

- Stainless Steel 316L

DIAL

- Black

STRAP

- Black Rubber



A663AAA-NR-MA4660A

CASE

- Stainless Steel 316L

DIAL

- Black

STRAP

- Stainless Steel 316L

J09

Downtown
CHRONOGRAPH



J09 CHRONOGRAPH

Mechanical, automatic with a power reserve of 46 hours
Chronograph AN500 (based on SW-500 modified per
Armand Nicolet's specifications).

Guilloché dial with luminous applied indexes and hands.
Case with antiglare treated sapphire crystal on top and
sapphire crystal in the see-through screwed back.

TECHNICAL SPECIFICATIONS :

- Case and Buckle: Stainless Steel 316L
- Water Resistance: 5 ATM
- Diameter: 41 mm
- Thickness: 14,6 mm

VERSIONS :

- Stainless Steel 316L

STRAPS & BRACELETS AVAILABLE :

- 24 mm blue or black rubber band with stainless steel 316L deployment buckle
- 24 mm brown, black or camel tone calf leather stainless steel 316L tang buckle
- 24 mm stainless steel 316L bracelet



WRIST CIRCUMFERENCE

Metal: Min 140mm - Max 215mm
Rubber: Min 175mm - Max 220mm
Leather: Min 165mm - Max 220mm

J09 CHRONOGRAPH



A668AAA-AG-PK4140TM

CASE

- Stainless Steel 316L

DIAL

- Silvered

STRAP

- Brown Vintage Calf



A668AAA-AG-GG4710N

CASE

- Stainless Steel 316L

DIAL

- Silvered

STRAP

- Black Rubber



A668AAA-AG-MA4660A

CASE

- Stainless Steel 316L

DIAL

- Silvered

STRAP

- Stainless Steel 316L

J09 CHRONOGRAPH



A668AAA-BU-PK4140CA

CASE

- Stainless Steel 316L

DIAL

- Blue

STRAP

- Camel Tone Vintage Calf



A668AAA-BU-GG4710U

CASE

- Stainless Steel 316L

DIAL

- Blue

STRAP

- Blue Rubber



A668AAA-BU-MA4660A.

CASE

- Stainless Steel 316L

DIAL

- Blue

STRAP

- Stainless Steel 316L

J09 CHRONOGRAPH



A668AAA-GR-PK4140TM

CASE

- Stainless Steel 316L

DIAL

- Grey

STRAP

- Brown Vintage Calf



A668AAA-GR-GG4710N

CASE

- Stainless Steel 316L

DIAL

- Grey

STRAP

- Black Rubber



A668AAA-GR-MA4660A

CASE

- Stainless Steel 316L

DIAL

- Grey

STRAP

- Stainless Steel 316L

J09 CHRONOGRAPH



A668AAA-NR-PK4140NR

CASE

- Stainless Steel 316L

DIAL

- Black

STRAP

- Black Vintage Calf



A668AAA-NR-GG4710N

CASE

- Stainless Steel 316L

DIAL

- Black

STRAP

- Black Rubber



A668AAA-NR-MA4660A

CASE

- Stainless Steel 316L

DIAL

- Black

STRAP

- Stainless Steel 316L

J09 STRAPS



GG4710U+BX18-9742

24mm Blue Rubber Band
with Stainless Steel
Deployment Buckle



GG4710N+BX18-9742

24mm Black Rubber
Band with Stainless Steel
Deployment Buckle



MA4660A

24mm Stainless Steel
Bracelet



BX18-9742

Deployment buckle

J09 STRAPS



PK4140NR+ BX18-9610

24mm Black Vintage Calf strap with stainless steel tang buckle



PK4140CA+ BX18-9610

24mm Camel Tone Vintage Calf strap with stainless steel tang buckle



PK4140TM+ BX18-9610

24mm Dark brown Vintage Calf strap with stainless steel tang buckle



BX18-9610

Tang Buckle



JS9-41
Acqua 41
DATE

JS9-41 DATE

Mechanical, automatic with a power reserve of 38 hours
Calibre Date AN200 (based on SW-200 modified per
Armand Nicolet's specifications)
Guilloché dial with luminous applied indexes and hands.
Case with antiglare treated sapphire crystal on top and
screwed back. Unidirectional turning ceramic bezel.

TECHNICAL SPECIFICATIONS :

- Case and Buckle: stainless steel 316L or DLC Black stainless steel 316L
- Water Resistance: 30 ATM
- Diameter: 41 mm
- Thickness: 13 mm

VERSIONS :

- Stainless Steel 316L
- D.L.C. Black Stainless Steel 316L

STRAPS & BRACELETS AVAILABLE :

- 22 mm blue or black rubber band with stainless steel 316L deployment buckle
- 22 mm black rubber band with DLC Black stainless steel 316L deployment buckle
- 22 mm stainless steel 316L bracelet



WRIST CIRCUMFERENCE

Metal: Min 135mm - Max 220mm
Rubber: Min 165mm - Max 215mm

JS9-41 DATE



A481ASN-NS-GG2710N

CASE

- Stainless Steel 316L with turning black ceramic bezel

DIAL

- Black/rose gold color indexes

STRAP

- Black Rubber



A481ASN-NS-MA2481AA

CASE

- Stainless Steel 316L with turning black ceramic bezel

DIAL

- Black/rose gold color indexes

STRAP

- Stainless Steel 316L



A481ASN-AS-GG2710N

CASE

- Stainless Steel 316L with turning black ceramic bezel

DIAL

- Silvered/rose gold color indexes

STRAP

- Black Rubber



A481ASN-AS-MA2481AA

CASE

- Stainless Steel 316L with turning black ceramic bezel

DIAL

- Silvered/rose gold color indexes

STRAP

- Stainless Steel 316L

JS9-41 DATE



A481AGN-NR-GG2710N

CASE

- Stainless Steel 316L with turning black ceramic bezel

DIAL

- Black

STRAP

- Black Rubber



A481AGN-NR-MA2481AA

CASE

- Stainless Steel 316L with turning black ceramic bezel

DIAL

- Black

STRAP

- Stainless Steel 316L



A481AGN-AG-GG2710N

CASE

- Stainless Steel 316L with turning black ceramic bezel

DIAL

- Silvered

STRAP

- Black Rubber



A481AGN-AG-MA2481AA

CASE

- Stainless Steel 316L with turning black ceramic bezel

DIAL

- Silvered

STRAP

- Stainless Steel 316L

JS9-41 DATE



A481AGU-BU-GG2710U

CASE

- Stainless Steel 316L with turning blue ceramic bezel

DIAL

- Blue

STRAP

- Blue Rubber



A481AGU-BU-MA2481AA

CASE

- Stainless Steel 316L with turning blue ceramic bezel

DIAL

- Blue

STRAP

- Stainless Steel 316L



A481AQS-NS-GG2710N

CASE

- D.L.C. Black Stainless Steel 316L with turning black ceramic bezel

DIAL

- Black/rose gold color indexes

STRAP

- Black Rubber



A481AQS-AS-GG2481AA

CASE

- D.L.C. Black Stainless Steel 316L with turning black ceramic bezel

DIAL

- Silvered/rose gold color indexes

STRAP

- Black Rubber



JS9-41
Acqua 41
GMT

JS9-41 GMT

Mechanical, automatic with a power reserve of 50 hours
Calibre GMT AN330 (based on SW-330 modified per Armand Nicolet's specifications)
Guilloché dial with luminous applied indexes and hands.
Case with antiglare treated sapphire crystal.
Screwed back. Unidirectional turning ceramic bezel

TECHNICAL SPECIFICATIONS :

- Case and Buckle: stainless steel 316L or DLC Black stainless steel 316L
- Water Resistance: 30 ATM
- Diameter: 41 mm
- Thickness: 13 mm

VERSIONS :

- Stainless Steel 316L
- D.L.C. Black Stainless Steel 316L

STRAPS & BRACELETS AVAILABLE :

- 22 mm blue or black rubber band with stainless steel 316L deployment buckle
- 22 mm black rubber band with DLC Black stainless steel 316L deployment buckle
- 22 mm stainless steel 316L bracelet



WRIST CIRCUMFERENCE

Metal: Min 135mm - Max 220mm
Rubber: Min 165mm - Max 215mm

JS9-41 GMT



A487BGU-BU-GG2710U

CASE

- Stainless Steel 316L with turning red&blue ceramic bezel

DIAL

- Blue

STRAP

- Blue Rubber



A487BGU-BU-MA2481AA

CASE

- Stainless Steel 316L with turning red&blue ceramic bezel

DIAL

- Blue

STRAP

- Stainless Steel 316L



A487BGN-NR-GG2710N

CASE

- Stainless Steel 316L with turning red&blue ceramic bezel

DIAL

- Black

STRAP

- Black Rubber



A487BGN-NR-MA2481AA

CASE

- Stainless Steel 316L with turning red&blue ceramic bezel

DIAL

- Black

STRAP

- Stainless Steel 316L

JS9-41 GMT



A487AGU-BU-GG2710U

CASE

- Stainless Steel 316L with turning black&blue ceramic bezel

DIAL

- Blue

STRAP

- Blue Rubber



A487AGU-BU-MA2481AA

CASE

- Stainless Steel 316L with turning black&blue ceramic bezel

DIAL

- Blue

STRAP

- Stainless Steel 316L



A487AGN-NR-GG2710N

CASE

- Stainless Steel 316L with turning black&blue ceramic bezel

DIAL

- Black

STRAP

- Black Rubber



A487AGN-NR-MA2481AA

CASE

- Stainless Steel 316L with turning black&blue ceramic bezel

DIAL

- Black

STRAP

- Stainless Steel 316L

JS9-41 GMT



A487ASN-NS-GG2710N

CASE

- Stainless Steel 316L with turning black ceramic bezel

DIAL

- Black/rose gold color indexes

STRAP

- Black Rubber



A487ASN-NS-MA2481AA

CASE

- Stainless Steel 316L with turning black ceramic bezel

DIAL

- Black/rose gold color indexes

STRAP

- Stainless Steel 316L



A487ASN-AS-GG2710N

CASE

- Stainless Steel 316L with turning black ceramic bezel

DIAL

- Silvered/rose gold color indexes

STRAP

- Black Rubber



A487ASN-AS-MA2481AA

CASE

- Stainless Steel 316L with turning black ceramic bezel

DIAL

- Silvered/rose gold color indexes

STRAP

- Stainless Steel 316L

JS9-41 STRAPS



GG2710U+BX18-9742

22mm Blue Rubber Band
with Stainless Steel
Deployment Buckle



GG2710N+BX18-9742

22mm Black Rubber
Band with Stainless Steel
Deployment Buckle



GG2710N+BX18-9742N

22mm Black Rubber with
D.L.C. Black Stainless Steel
Deployment Buckle



MA2481AA

22mm Stainless Steel
Bracelet



BX18-9742

Deployment buckle

JS9-44

Acqua 44

DATE



JS9-44 DATE

Mechanical, automatic with a power reserve of 38 hours
Calibre Date AN200 (based on SW-200 modified per
Armand Nicolet's specifications)
Dial with luminous indexes and hands.
Case with antiglare treated sapphire crystal.
Screwed back. Unidirectional turning ceramic bezel.

TECHNICAL SPECIFICATIONS :

- Case and Buckle: stainless steel 316L or DLC Black stainless steel 316L
- Water Resistance: 30 ATM
- Diameter: 44 mm
- Thickness: 13 mm

VERSIONS :

- Stainless Steel 316L
- D.L.C. Black Stainless Steel 316L

STRAPS & BRACELETS AVAILABLE :

- 24 ,mm blue or black rubber band with stainless steel 316L deployment buckle
- 24 mm black rubber band with DLC Black stainless steel 316L deployment buckle
- 24 mm stainless steel 316L bracelet



WRIST CIRCUMFERENCE

Metal: Min 140mm - Max 225mm
Rubber: Min 175mm - Max 220mm

JS9-44 DATE



A480ASN-NS-GG4710N

CASE

- Stainless Steel 316L with turning black ceramic bezel

DIAL

- Black/rose gold color indexes

STRAP

- Black Rubber



A480ASN-NS-MA4480AA

CASE

- Stainless Steel 316L with turning black ceramic bezel

DIAL

- Black/rose gold color indexes

STRAP

- Stainless Steel 316L



A480ASN-AS-GG4710N

CASE

- Stainless Steel 316L with turning black ceramic bezel

DIAL

- Silvered/rose gold color indexes

STRAP

- Black Rubber



A480ASN-AS-MA4480AA

CASE

- Stainless Steel 316L with turning black ceramic bezel

DIAL

- Silvered/rose gold color indexes

STRAP

- Stainless Steel 316L

JS9-44 DATE



A480AGN-NR-GG4710N

CASE

- Stainless Steel 316L with turning black ceramic bezel

DIAL

- Black

STRAP

- Black Rubber



A480AGN-NR-MA4480AA

CASE

- Stainless Steel 316L with turning black ceramic bezel

DIAL

- Black

STRAP

- Stainless Steel 316L



A480AGN-AG-GG4710N

CASE

- Stainless Steel 316L with turning black ceramic bezel

DIAL

- Silvered

STRAP

- Black Rubber



A480AGN-AG-MA4480AA

CASE

- Stainless Steel 316L with turning black ceramic bezel

DIAL

- Silvered

STRAP

- Stainless Steel 316L

JS9-44 DATE



A480AGU-BU-GG4710U

CASE

- Stainless Steel 316L with turning blue ceramic bezel

DIAL

- Blue

STRAP

- Blue Rubber



A480AGU-BU-MA4480AA

CASE

- Stainless Steel 316L with turning blue ceramic bezel

DIAL

- Blue

STRAP

- Stainless Steel 316L



A480AQS-AS-GG4710N

CASE

- Stainless Steel 316L with turning black ceramic bezel

DIAL

- Silvered/rose gold color indexes

STRAP

- Black Rubber



A480AQS-NS-GG4710N

CASE

- Stainless Steel 316L with turning black ceramic bezel

DIAL

- Black/rose gold color indexes

STRAP

- Black Rubber

JS9-44

Acqua 44
G.M.T



JS9-44 GMT

Mechanical, automatic with a power reserve of 50 hours
Calibre GMT AN330 (based on SW-330 modified per Armand Nicolet's specifications)
Dial with luminous indexes and hands.
Case with antiglare treated sapphire crystal.
Screwed back. Unidirectional turning ceramic bezel.

TECHNICAL SPECIFICATIONS :

- Case and Buckle: stainless steel 316L or DLC Black stainless steel 316L
- Water Resistance: 30 ATM
- Diameter: 44 mm
- Thickness: 13 mm

VERSIONS :

- Stainless Steel 316L
- D.L.C. Black Stainless Steel 316L

STRAPS & BRACELETS AVAILABLE :

- 24 mm blue or black rubber band with stainless steel 316L deployment buckle
- 24 mm black rubber band with DLC Black stainless steel 316L deployment buckle
- 24 mm stainless steel 316L bracelet



WRIST CIRCUMFERENCE

Metal: Min 140mm - Max 225mm
Rubber: Min 175mm - Max 220mm

JS9-44 GMT



A486BGU-BU-GG4710U

CASE

- Stainless Steel 316L with turning red&blue ceramic bezel

DIAL

- Blue

STRAP

- Blue Rubber



A486BGU-BU-MA4480AA

CASE

- Stainless Steel 316L with turning red&blue ceramic bezel

DIAL

- Blue

STRAP

- Stainless Steel 316L



A486BGN-NR-GG4710N

CASE

- Stainless Steel 316L with turning red&black ceramic bezel

DIAL

- Black

STRAP

- Black Rubber



A486BGN-NR-MA4480AA

CASE

- Stainless Steel 316L with turning red&black ceramic bezel

DIAL

- Black

STRAP

- Stainless Steel 316L

JS9-44 GMT



A486AGU-BU-GG4710U

CASE

- Stainless Steel 316L with turning black&blue ceramic bezel

DIAL

- Blue

STRAP

- Blue Rubber



A486AGU-BU-MA4480AA

CASE

- Stainless Steel 316L with turning black&blue ceramic bezel

DIAL

- Blue

STRAP

- Stainless Steel 316L



A486AGN-NR-GG4710N

CASE

- Stainless Steel 316L with turning black&blue ceramic bezel

DIAL

- Black

STRAP

- Black Rubber



A486AGN-NR-MA4480AA

CASE

- Stainless Steel 316L with turning black&blue ceramic bezel

DIAL

- Black

STRAP

- Stainless Steel 316L

JS9-44 GMT



A486ASN-NS-GG4710N

CASE

- Stainless Steel 316L with turning black ceramic bezel

DIAL

- Black/rose gold color indexes

STRAP

- Black Rubber



A486ASN-NS-MA4480AA

CASE

- Stainless Steel 316L with turning black ceramic bezel

DIAL

- Black/rose gold color indexes

STRAP

- Stainless Steel 316L

JS9-44 STRAPS



GG2710U +BX18-9742

24mm Blue Rubber Band
with Stainless Steel
Deployment Buckle



GG4710N+BX18-9742

24mm Black Rubber
Band with Stainless Steel
Deployment Buckle



GG4710N+BX18-9742N

24mm Black Rubber with
D.L.C. Black Stainless Steel
Deployment Buckle



MA4480A

24mm Stainless Steel
Bracelet



BX18-9742

Deployment buckle



M02
Design
DATE

M02 DATE

Mechanical, automatic with a power reserve of 38 hours

Calibre Date AN200 based on SW-200 modified per Armand Nicolet's specifications

Guilloché decorated dial with applied indexes and Arabic numbers

Case with antiglare treated sapphire crystal and see-through screwed back.

TECHNICAL SPECIFICATIONS :

- Case and Buckle: Stainless Steel 316L
- Water Resistance: 10 ATM
- Diameter: 42 mm
- Thickness: 12,3 mm

VERSIONS :

- Stainless Steel 316L

STRAPS & BRACELETS AVAILABLE :

- 22 mm alligator-embossed calf strap with stainless steel 316L deployment buckle
- 22 mm leather strap with stainless steel 316L tang buckle
- 22 mm stainless steel 316L bracelet



WRIST CIRCUMFERENCE

Metal: Min 140mm - Max 215mm
Calf Leather: Min 175mm - Max 220mm
Leather: Min 165mm - Max 215mm

M02 DATE



A840AAA-AG-M9742

CASE

- Stainless Steel 316L

DIAL

- Silvered

STRAP

- Stainless Steel



A840AAA-AG-P840MR2

CASE

- Stainless Steel 316L

DIAL

- Silvered

STRAP

- Brown Leather (alligator Pattern)



A840AAA-BU-M9742

CASE

- Stainless Steel 316L

DIAL

- Blue

STRAP

- Stainless Steel



A840AAA-BU-P840BU2

CASE

- Stainless Steel 316L

DIAL

- Blue

STRAP

- Blue Leather (alligator Pattern)

M02 DATE



A840AAA-GR-M9742

CASE

- Stainless Steel 316L

DIAL

- Grey

STRAP

- Stainless Steel



A840AAA-GR-P840GR2

CASE

- Stainless Steel 316L

DIAL

- Grey

STRAP

- Grey Leather (alligator Pattern)



A840AAA-BU-M9742

CASE

- Stainless Steel 316L

DIAL

- Black

STRAP

- Stainless Steel



A840AAA-NR-P840NR2

CASE

- Stainless Steel 316L

DIAL

- Black

STRAP

- Black Leather (alligator Pattern)

M02 DATE



A840AAA-AG-P140MR2

CASE

- Stainless Steel 316L

DIAL

- Silvered

STRAP

- Brown Leather



A840AAA-BU-P140BU2

CASE

- Stainless Steel 316L

DIAL

- Blue

STRAP

- Blue Leather



A840AAA-GR-P140MR2

CASE

- Stainless Steel 316L

DIAL

- Grey

STRAP

- Brown Leather



A840AAA-NR-P140NR2

CASE

- Stainless Steel 316L

DIAL

- Black

STRAP

- Black Leather

M02
Design
GMT



M02 G M T

Mechanical automatic with a power reserve of 50 hours
Caliber AN330 (based on SW-330 modified per Armand
Nicolet's specifications).

Guilloché decorated dial with applied indexes and Arabic
numbers

Case with antiglare treated sapphire crystal and see-through
screwed back.

TECHNICAL SPECIFICATIONS :

- Case and Buckle: Stainless Steel 316L
- Water Resistance: 10 ATM
- Diameter: 42 mm
- Thickness: 11,8 mm

VERSIONS :

- Stainless Steel 316L

STRAPS AVAILABLE :

- 22 mm alligator-embossed calf strap with stainless steel
316L deployment buckle
- 22 mm leather strap with stainless steel 316L tang buckle
- 22 mm stainless steel 316L bracelet



WRIST CIRCUMFERENCE

Metal: Min 140mm - Max 215mm
Calf Leather: Min 175mm - Max 220mm
Leather: Min 165mm - Max 215mm

M02 GMT



A846AAA-AG-M9742

CASE

- Stainless Steel 316L

DIAL

- Silvered

STRAP

- Stainless Steel



A846AAA-AG-P840MR2

CASE

- Stainless Steel 316L

DIAL

- Silvered

STRAP

- Brown Leather (alligator Pattern)



A846AAA-BU-M9742

CASE

- Stainless Steel 316L

DIAL

- Blue

STRAP

- Stainless Steel



A846AAA-BU-P840BU2

CASE

- Stainless Steel 316L

DIAL

- Blue

STRAP

- Blue Leather (alligator Pattern)

M02 GMT



A846AAA-GR-M9742

CASE

- Stainless Steel 316L

DIAL

- Grey

STRAP

- Stainless Steel



A846AAA-GR-P840GR2

CASE

- Stainless Steel 316L

DIAL

- Grey

STRAP

- Grey Leather (alligator Pattern)



A846AAA-NR-M9742

CASE

- Stainless Steel 316L

DIAL

- Black

STRAP

- Stainless Steel



A846AAA-NR-P840NR2

CASE

- Stainless Steel 316L

DIAL

- Black

STRAP

- Black Leather (alligator Pattern)

M02 GMT



A846AAA-AG-P140MR2

CASE

- Stainless Steel 316L

DIAL

- Silvered

STRAP

- Brown Leather



A846AAA-BU-P140BU2

CASE

- Stainless Steel 316L

DIAL

- Blue

STRAP

- Blue Leather



A846AAA-GR-P140MR2

CASE

- Stainless Steel 316L

DIAL

- Grey

STRAP

- Brown Leather



A846AAA-NR-P140NR2

CASE

- Stainless Steel 316L

DIAL

- Black

STRAP

- Black Leather

M02

Design

CHRONOGRAPH



M02 CHRONOGRAPH

Mechanical, automatic with a power reserve of 46 hours
Chronograph & Date AN500 (based on SW-500 modified per
Armand Nicolet's specifications).

Guilloché decorated dial with applied indexes and Arabic
numbers

Case with antiglare treated sapphire crystal and see-through
screwed back.

TECHNICAL SPECIFICATIONS :

- Case and Buckle: Stainless Steel 316L
- Water Resistance: 10 ATM
- Diameter: 42 mm
- Thickness: 14,9 mm

VERSIONS :

- Stainless Steel 316L

STRAPS & BRACELETS AVAILABLE :

- 22 mm alligator-embossed calf strap with stainless steel 316L deployment buckle
- 22 mm leather strap with stainless steel 316L tang buckle
- 22 mm stainless steel 316L bracelet



WRIST CIRCUMFERENCE

Metal: Min 140mm - Max 215mm
Calf Leather: Min 175mm - Max 220mm
Leather: Min 165mm - Max 215mm

M02 CHRONOGRAPH



A844AAA-AG-M9742

CASE

- Stainless Steel 316L

DIAL

- Silvered

STRAP

- Stainless Steel



A844AAA-AG-P840MR2

CASE

- Stainless Steel 316L

DIAL

- Silvered

STRAP

- Brown Leather (alligator Pattern)



A844AAA-BU-M9742

CASE

- Stainless Steel 316L

DIAL

- Blue

STRAP

- Stainless Steel



A844AAA-BU-P840BU2

CASE

- Stainless Steel 316L

DIAL

- Blue

STRAP

- Blue Leather (alligator Pattern)

M02 CHRONOGRAPH



A844AAA-GR-M9742

CASE

- Stainless Steel 316L

DIAL

- Grey

STRAP

- Stainless Steel



A844AAA-GR-P840GR2

CASE

- Stainless Steel 316L

DIAL

- Grey

STRAP

- Grey Leather (alligator Pattern)



A844AAA-NR-M9742

CASE

- Stainless Steel 316L

DIAL

- Black

STRAP

- Stainless Steel



A844AAA-NR-P840NR2

CASE

- Stainless Steel 316L

DIAL

- Black

STRAP

- Black Leather (alligator Pattern)

M02 CHRONOGRAPH



A844AAA-AG-P140MR2

CASE

- Stainless Steel 316L

DIAL

- Silvered

STRAP

- Brown Leather



A844AAA-BU-P140BU2

CASE

- Stainless Steel 316L

DIAL

- Blue

STRAP

- Blue Leather



A844AAA-GR-P140MR2

CASE

- Stainless Steel 316L

DIAL

- Grey

STRAP

- Brown Leather



A844AAA-NR-P140NR2

CASE

- Stainless Steel 316L

DIAL

- Black

STRAP

- Black Leather

M02 STRAPS



M9742

22mm Stainless Steel 316L



P140BU2+BX18-9610

22mm Blue Calf Strap with
Stainless Steel tang Buckle



P140MR2+BX18-9610

22mm Brown Calf Strap with
Stainless Steel tang Buckle



P140NR2+BX18-9610

22mm Black Calf Strap with
Stainless Steel tang buckle



BX18-9610

Tang Buckle

M02 STRAPS



P840BU2+BX18-9742

22mm Blue Alligator-embossed calf strap with stainless steel deployment buckle



P840GR2+BX18-9742

22mm Grey Alligator-embossed calf strap with stainless steel deployment buckle



P840MR2+BX18-9742

22mm Dark Brown Alligator-embossed calf strap with stainless steel deployment buckle



P840NR2+BX18-9742

22mm Black Alligator-embossed calf strap with stainless steel deployment buckle



BX18-9742

Deployment buckle

MM2
Urban
DATE



MM2 DATE

Mechanical, automatic with a power reserve of 38 hours
Calibre Date AN200 (based on SW-200 modified per Armand Nicolet's specifications)
Stainless steel case, fixed stainless steel bezel.
Dial with raised Arabic numeral markers. Luminescent hands and markers.
Case with antiglare treated sapphire crystal and see-through screwed back.

TECHNICAL SPECIFICATIONS :

- Case and Buckle: Stainless Steel 316L
- Water Resistance: 10 ATM
- Diameter: 43 mm
- Thickness: 12,6 mm

VERSIONS :

- Stainless Steel 316L

STRAPS & BRACELETS AVAILABLE :

- Canvas strap with stainless steel tang buckle
- Leather strap with stainless steel 316L tang buckle
- Nato strap with stainless steel buckle



WRIST CIRCUMFERENCE

Canvas: Min 160mm - Max 215mm

MM2 DATE



A640P-KA-P0640KM8

CASE

- Stainless Steel 316L

DIAL

- Beige&Orange

STRAP

- Kahki Canvas



A640P-KN-P0640NC8

CASE

- Stainless Steel 316L

DIAL

- Black&Orange

STRAP

- Black Canvas



A640P-BN-P0640BO8

CASE

- Stainless Steel 316L

DIAL

- Blue&Orange

STRAP

- Blue Canvas



A640P-NV-P0640KM8

CASE

- Stainless Steel 316L

DIAL

- Green&Orange

STRAP

- Kahki Canvas

MM2 DATE



A640P-KA-BN22481AAVV

CASE

- Stainless Steel 316L

DIAL

- Beige&Orange

STRAP

- Green NATO



A640P-KN-BN22481AANN

CASE

- Stainless Steel 316L

DIAL

- Black&Orange

STRAP

- Black NATO



A640P-BN-BN22481AAUU

CASE

- Stainless Steel 316L

DIAL

- Blue&Orange

STRAP

- Blue NATO



A640P-NV-BN22481AAGG

CASE

- Stainless Steel 316L

DIAL

- Green&Orange

STRAP

- Grey NATO

MM2 DATE



A640P-KA-BP22640MAC

CASE

- Stainless Steel 316L

DIAL

- Beige&Orange

STRAP

- Brown leather strap



A640P-KN-BP22640NAC

CASE

- Stainless Steel 316L

DIAL

- Black&Orange

STRAP

- Black leather strap



A640P-BN-BP22641BAO

CASE

- Stainless Steel 316L

DIAL

- Blue&Orange

STRAP

- Blue leather strap



A640P-NV-BP22640VAO

CASE

- Stainless Steel 316L

DIAL

- Green&Orange

STRAP

- Green leather strap

MM2

Urban
CHRONOGRAPH



MM2 CHRONOGRAPH

Mechanical, automatic with a power reserve of 46 hours
Chronograph & Date AN500 (based on SW-500 modified per
Armand Nicolet's specifications).

Stainless steel case, fixed stainless steel bezel.
Dial with raised Arabic numeral markers. Luminescent hands
and markers.

Case with antiglare treated sapphire crystal and see-through
screwed back.

TECHNICAL SPECIFICATIONS :

- Case and Buckle: Stainless Steel 316L
- Water Resistance: 10 ATM
- Diameter: 43 mm
- Thickness: 14,8 mm

VERSIONS :

- Stainless Steel 316L

STRAPS & BRACELETS AVAILABLE :

- Canvas strap with stainless steel tang buckle
- Leather strap with stainless steel 316L tang buckle
- Nato strap with stainless steel buckle



WRIST CIRCUMFERENCE

Canvas: Min 160mm - Max 215mm

MM2 CHRONOGRAPH



A647P-KA-P0640KM8

CASE

- Stainless Steel 316L

DIAL

- Beige&Orange

STRAP

- Kahki Canvas



A647P-KN-P0640NC8

CASE

- Stainless Steel 316L

DIAL

- Black&Orange

STRAP

- Black Canvas



A647P-BN-P0640BO8

CASE

- Stainless Steel 316L

DIAL

- Blue&Orange

STRAP

- Blue Canvas



A647P-NV-P0640KM8

CASE

- Stainless Steel 316L

DIAL

- Green&Orange

STRAP

- Kahki Canvas

MM2 CHRONOGRAPH



A647P-KA-BN22481AAVV

CASE

- Stainless Steel 316L

DIAL

- Beige&Orange

STRAP

- Green NATO



A647P-KN-BN22481AANN

CASE

- Stainless Steel 316L

DIAL

- Black&Orange

STRAP

- Black NATO



A647P-BN-BN22481AAUU

CASE

- Stainless Steel 316L

DIAL

- Blue&Orange

STRAP

- Blue NATO



A647P-NV-BN22481AAGG

CASE

- Stainless Steel 316L

DIAL

- Green&Orange

STRAP

- Grey NATO

MM2 CHRONOGRAPH



A647P-KA-BP22640MAC

CASE

- Stainless Steel 316L

DIAL

- Beige&Orange

STRAP

- Brown leather strap



A647P-KN-BP22640NAC

CASE

- Stainless Steel 316L

DIAL

- Black&Orange

STRAP

- Black leather strap



A647P-BN-BP22641BAO

CASE

- Stainless Steel 316L

DIAL

- Blue&Orange

STRAP

- Blue leather strap



A647P-NV-BP22640VAO

CASE

- Stainless Steel 316L

DIAL

- Green&Orange

STRAP

- Green leather strap

MM2 STRAPS



P0640KM8+BX18-9610

22mm Kahki canvas strap
Stainless Steel tang buckle



P0640BO8+BX18-9610

22mm Blue canvas strap
Stainless Steel tang buckle



P0640NC8+BX18-9610

22mm Black canvas strap
Stainless Steel tang buckle



BX18-9610

Tang Buckle



AL3
Woman Touch
CHRONOGRAPH

AL3 CHRONOGRAPH

Quartz movement with chronograph function.

Caliber ETA 251.272.

Guilloché decorated dial with Mother of Pearl, set with #4 diamonds brilliant cut, quality VS-SI, colour grade F-G, total 0.04 carats.

Case with antiglare treated sapphire crystal screwed back

TECHNICAL SPECIFICATIONS :

- Case and Buckle: Stainless Steel 316L
- Water Resistance: 5 ATM
- Diameter: 38.5 mm
- Thickness: 11 mm

VERSIONS :

- Stainless Steel 316L guilloché and MOP dial set with #4 diamonds

STRAPS AVAILABLE :

- 18 mm alligator-embossed calf strap with stainless steel deployment buckle



WRIST CIRCUMFERENCE
Min 155mm - Max 205mm

AL3 CHRONOGRAPH



A884AAA-AK-P882LV8

CASE

- Stainless Steel 316L

DIAL

- Silvered Guilloché and Blue MOP set with #4 Diamonds

STRAP

- Lavender Leather



A884AAA-AN-P882BC8

CASE

- Stainless Steel 316L

DIAL

- Silvered Guilloché and White MOP set with #4 Diamonds

STRAP

- White Leather



A884AAA-AS-P882RS8

CASE

- Stainless Steel 316L

DIAL

- Silvered Guilloché and Pink MOP set with #4 Diamonds

STRAP

- Pink Leather



A884AAA-NN-P882NR8

CASE

- Stainless Steel 316L

DIAL

- Silvered Guilloché and Black MOP set with #4 Diamonds

STRAP

- Black Leather

AL3 STRAPS



PC882BC8+BX15-9742

18mm White Alligator-embossed calf strap with stainless steel deployment buckle



P882LV8+BX15-9742

18mm Lavender Alligator-embossed calf strap with stainless steel deployment buckle



P882NR8+BX15-9742

18mm Black Alligator-embossed calf strap with stainless steel deployment buckle



P882RS8+BX15-9742

18mm Pink Alligator-embossed calf strap with stainless steel deployment buckle



BX15-9742

Deployment buckle



V S T
DATE

VS1 DATE

Mechanical automatic with a power reserve of 38 hours
A500-Mechanical automatic movement with Date functions.
Calibre AN200 (based on SW-200 modified per Armand Nicolet's specifications.

Gradient dial with luminous indexes and hands.
Stainless steel 316L, screwed in crown, unidirectional turning bezel with acrylic insert.

Sapphire treated acrylic crystal with lens on the date

TECHNICAL SPECIFICATIONS :

- Case and Buckle: Stainless Steel 316L
- Water Resistance: 10 ATM
- Diameter: 38 mm
- Thickness: 13.5 mm

VERSIONS :

- Stainless Steel 316L

STRAPS & BRACELETS AVAILABLE :

- Stainless steel 316L bracelet
- NATO
- Calf leather



WRIST CIRCUMFERENCE

Metal: Min 145mm - Max 215mm
Nato: Min 153mm - Max 230mm
Calf leather: Min 165 - Max 215mm

VS1 DATE



A500ANAA-NS-BMA500A

CASE

- Stainless Steel 316L

DIAL

- Black Dial

STRAP

- Stainless Steel 316L



A500AVAA-VS-BMA500A

CASE

- Stainless Steel 316L

DIAL

- Green Dial

STRAP

- Stainless Steel 316L



A500AXAA-AS-BMA500A

CASE

- Stainless Steel 316L

DIAL

- Silvered Dial

STRAP

- Stainless Steel 316L



A500AXAA-XS-BMA500A

CASE

- Stainless Steel 316L

DIAL

- Burgundy Dial

STRAP

- Stainless Steel 316L

VS1 DATE



A500ANAA-NS-BN19500AANG

CASE

- Stainless Steel 316L

DIAL

- Black Dial

STRAP

- Black & Grey Nato



A500AVAA-VS-BN19500AAGG

CASE

- Stainless Steel 316L

DIAL

- Green Dial

STRAP

- Beige Nato



A500AXAA-AS-BN19500AABX

CASE

- Stainless Steel 316L

DIAL

- Silvered Dial

STRAP

- Burgundy Nato



A500AXAA-XS-BN19500AABX

CASE

- Stainless Steel 316L

DIAL

- Burgundy Dial

STRAP

- Burgundy Nato

VS1 DATE



A500ANAA-NS-BP19500MAC

CASE

- Stainless Steel 316L

DIAL

- Black Dial

STRAP

- Brown Calf Strap



A500AVAA-VS-BP19500MAC

CASE

- Stainless Steel 316L

DIAL

- Green Dial

STRAP

- Brown Calf Strap



A500AXAA-AS-BP19500MAC

CASE

- Stainless Steel 316L

DIAL

- Silvered Dial

STRAP

- Brown Calf Strap



A500AXAA-XS-BP19500MAC

CASE

- Stainless Steel 316L

DIAL

- Burgundy Dial

STRAP

- Brown Calf Strap



V S T
G M T

VSI GMT

Mechanical automatic with a power reserve of 50 hours
A506-Mechanical automatic movement with Date and GMT functions. Calibre AN330 for GMT and Date functions (based on SW-330 modified per Armand Nicolet's specifications).

Gradient dial with luminous indexes and hands.
Stainless steel 316L, screwed in crown, unidirectional turning bezel with acrylic insert showing the 24 hours,, screwed back.

Sapphire treated acrylic crystal with lens on the date

TECHNICAL SPECIFICATIONS :

- Case and Buckle: Stainless Steel 316L
- Water Resistance: 10 ATM
- Diameter: 38 mm
- Thickness: 13.5 mm

VERSIONS :

- Stainless Steel 316L

STRAPS & BRACELETS AVAILABLE :

- Stainless steel 316L bracelet
- NATO
- Calf leather



WRIST CIRCUMFERENCE

Metal: Min 145mm - Max 215mm
Nato: Min 153mm - Max 230mm
Calf leather: Min 165 - Max 215mm

VS1 GMT



A506ANAA-NS-BMA500A

CASE

- Stainless Steel 316L

DIAL

- Black Dial

STRAP

- Stainless Steel 316L



A506AVAA-VS-BMA500A

CASE

- Stainless Steel 316L

DIAL

- Green Dial

STRAP

- Stainless Steel 316L



A506AXAA-AS-BMA500A

CASE

- Stainless Steel 316L

DIAL

- Silvered Dial

STRAP

- Stainless Steel 316L



A506AXAA-XS-BMA500A

CASE

- Stainless Steel 316L

DIAL

- Burgundy Dial

STRAP

- Stainless Steel 316L

VS1 GMT



A506ANAA-NS-BN19500AANG

CASE

- Stainless Steel 316L

DIAL

- Black Dial

STRAP

- Black & Grey Nato



A506AVAA-VS-BN19500AAGG

CASE

- Stainless Steel 316L

DIAL

- Green Dial

STRAP

- Beige Nato



A506AXAA-AS-BN19500AABX

CASE

- Stainless Steel 316L

DIAL

- Silvered Dial

STRAP

- Burgundy Nato



A506AXAA-XS-BN19500AABX

CASE

- Stainless Steel 316L

DIAL

- Burgundy Dial

STRAP

- Burgundy Nato

VS1 GMT



A506ANAA-NS-BP19500MAC

CASE

- Stainless Steel 316L

DIAL

- Black Dial

STRAP

- Brown Calf Strap



A506AVAA-VS-BP19500MAC

CASE

- Stainless Steel 316L

DIAL

- Green Dial

STRAP

- Brown Calf Strap



A506AXAA-AS-BP19500MAC

CASE

- Stainless Steel 316L

DIAL

- Silvered Dial

STRAP

- Brown Calf Strap



A506AXAA-XS-BP19500MAC

CASE

- Stainless Steel 316L

DIAL

- Burgundy Dial

STRAP

- Brown Calf Strap



V S I
CHRONOGRAPH



VSI CHRONOGRAPH

Mechanical automatic movement with Chrono&Date functions with a power reserve of 46 hours
Calibre AN500 for Chrono 2 counters and Date (based on SW-500 modified per Armand Nicolet's specifications).

Gradient dial with luminous indexes and hands, contrast eyes counters. Stainless Steel 316L, screwed in crown and pushers, fixed bezel with acrylic insert showing the Tachymeter, screwed back.

Sapphire treated acrylic crystal

TECHNICAL SPECIFICATIONS :

- Case and Buckle: Stainless Steel 316L
- Water Resistance: 10 ATM
- Diameter: 38 mm
- Thickness: 14.7 mm

VERSIONS :

- Stainless Steel 316L

STRAPS & BRACELETS AVAILABLE :

- Stainless steel 316L bracelet
- NATO
- Calf leather



WRIST CIRCUMFERENCE

Metal: Min 145mm - Max 215mm
Nato: Min 153mm - Max 230mm
Calf leather: Min 165 - Max 215mm

VS1 CHRONOGRAPH



A510ANAA-NS-BMA500A

CASE

- Stainless Steel 316L

DIAL

- Black Dial

STRAP

- Stainless Steel 316L



A510AVAA-VS-BMA500A

CASE

- Stainless Steel 316L

DIAL

- Green Dial

STRAP

- Stainless Steel 316L



A510AXAA-AS-BMA500A

CASE

- Stainless Steel 316L

DIAL

- Silvered Dial

STRAP

- Stainless Steel 316L



A510AXAA-XS-BMA500A

CASE

- Stainless Steel 316L

DIAL

- Burgundy Dial

STRAP

- Stainless Steel 316L

VS1 CHRONOGRAPH



A510ANAA-NS-BN19500AANG

CASE

- Stainless Steel 316L

DIAL

- Black Dial

STRAP

- Black & Grey Nato



A510AVAA-VS-BN19500AAGG

CASE

- Stainless Steel 316L

DIAL

- Green Dial

STRAP

- Beige Nato



A510AXAA-AS-BN19500AABX

CASE

- Stainless Steel 316L

DIAL

- Silvered Dial

STRAP

- Burgundy Nato



A510AXAA-XS-BN19500AABX

CASE

- Stainless Steel 316L

DIAL

- Burgundy Dial

STRAP

- Burgundy Nato

VS1 CHRONOGRAPH



A510ANAA-NS-BP19500MAC

CASE

- Stainless Steel 316L

DIAL

- Black Dial

STRAP

- Brown Calf Strap



A510AVAA-VS-BP19500MAC

CASE

- Stainless Steel 316L

DIAL

- Green Dial

STRAP

- Brown Calf Strap



A510AXAA-AS-BP19500MAC

CASE

- Stainless Steel 316L

DIAL

- Silvered Dial

STRAP

- Brown Calf Strap



A510AXAA-XS-BP19500MAC

CASE

- Stainless Steel 316L

DIAL

- Burgundy Dial

STRAP

- Brown Calf Strap



O.H.M
COLLECTION

O.H.M COLLECTION



LB6

SMALL SECONDS

116



L15

DATE

120



L16

SMALL SECONDS

124

LB 6



LB6

Mechanical movement, manual winding with hours, minutes & small seconds.
Caliber AN731B, obtained by FHF 264 produced in 1956 turned by Armand Nicolet
Smooth, domed dial with applied indexes.
Case with antiglare treated sapphire crystal on top and sapphire crystal in the see-through screwed back.

TECHNICAL SPECIFICATIONS :

- Case and Buckle: Stainless Steel 316L
- Water Resistance: 10 ATM
- Diameter: 43 mm
- Thickness: 10.5 mm

VERSIONS :

- Stainless Steel 316L

STRAPS AVAILABLE :

- 22mm vintage calf strap with stainless steel tang buckle



WRIST CIRCUMFERENCE
Min 155mm - Max 205mm

LB6



A134AAA-AG-PK2140TM

CASE

- Stainless Steel 316L

DIAL

- Silvered Dial

STRAP

- Brown Vintage Calf Strap



A134AAA-BU-PK2140MR

CASE

- Stainless Steel 316L

DIAL

- Blue Dial

STRAP

- Camel color Vintage Calf Strap



A134AAA-GR-PK2140TM

CASE

- Stainless Steel 316L

DIAL

- Grey Dial

STRAP

- Brown Vintage Calf Strap



A134AAA-NR-PK2140NR

CASE

- Stainless Steel 316L

DIAL

- Black Dial

STRAP

- Black Vintage Calf Strap

LB6 STRAPS



PK2140NR+ BX18-9610

22mm Black Vintage Calf strap with stainless steel tang buckle



PK2140MR+ BX18-9610

22mm Camel tone Calf strap with stainless steel tang buckle



PK2140TM+ BX18-9610

22mm Dark brown Calf strap with stainless steel tang buckle



BX18-9610

Tang Buckle

L 1 5



L15

Mechanical movement, automatic with a power reserve of 34h
Caliber AN703A, obtained by AS 1883 produced in 1967 and turned by Armand Nicolet
Classic dial with thin applied indexes.
Case with antiglare treated sapphire crystal and see-through screwed back.

Limited to 450 pieces

TECHNICAL SPECIFICATIONS :

- Water Resistance: 5 ATM
- Diameter: 39 mm
- Thickness: 10 mm

VERSIONS :

- Stainless Steel 316L
- STRAPS AVAILABLE :
- Grey or Black big scales Alligator with Stainless Steel 316L deployment buckle



WRIST CIRCUMFERENCE
Min 155mm - Max 205mm

L15



A780AAA-AG-PI0780NA

CASE

- Stainless Steel 316L

DIAL

- Silvered Dial

STRAP

- Black Big Scales Alligator Strap



A780AAA-GS-PI0780GA

CASE

- Stainless Steel 316L

DIAL

- Grey Dial

STRAP

- Grey Big Scales Alligator Strap



A780AAA-NR-PI0780NA

CASE

- Stainless Steel 316L

DIAL

- Black Dial

STRAP

- Black Big Scales Alligator Strap

L15 STRAPS



BPI0780-GR+BX15-9130

22mm Grey Alligator-embossed calf strap with stainless steel deployment buckle



BPI0780-NR+BX15-9130

22mm Black Alligator-embossed calf strap with stainless steel deployment buckle



BX15-9130

Tang buckle

L16



L16

Mechanical movement, manual winding with hours, minutes & small seconds.
Caliber AN731S, obtained by FHF 264 produced in 1953 and turned by Armand Nicolet
Guilloché dial with skeletonized pattern and applied indexes.
Case with antiglare treated sapphire crystal on top and sapphire crystal in the see-through screwed back.

TECHNICAL SPECIFICATIONS :

- Case and Buckle: Stainless Steel 316L
- Water Resistance: 10 ATM
- Diameter: 43 mm
- Thickness: 10.5 mm

VERSIONS :

- Stainless Steel 316L

STRAPS AVAILABLE :

- 22mm alligator-embossed calf strap with stainless steel deployment buckle



WRIST CIRCUMFERENCE
Min 155mm - Max 205mm

L16



A132AAA-AG-P840MR2

CASE

- Stainless Steel 316L

DIAL

- Silvered Dial

STRAP

- Brown Alligator-embossed calf strap



A132AAA-BU-P840BU2

CASE

- Stainless Steel 316L

DIAL

- Blue Dial

STRAP

- Blue Alligator-embossed calf strap



A132AAA-GR-P840GR2

CASE

- Stainless Steel 316L

DIAL

- Grey Dial

STRAP

- Grey Alligator-embossed calf strap



A132AAA-NR-P840NR2

CASE

- Stainless Steel 316L

DIAL

- Black Dial

STRAP

- Black Alligator-embossed calf strap

L16 STRAPS



P840BU2+BX18-9742

22mm Blue Alligator-embossed calf strap with stainless steel deployment buckle



P840GR2+BX18-9742

22mm Grey Alligator-embossed calf strap with stainless steel deployment buckle



P840MR2+BX18-9742

22mm Dark Brown Alligator-embossed calf strap with stainless steel deployment buckle



P840NR2+BX18-9742

22mm Black Alligator-embossed calf strap with stainless steel deployment buckle



BX15-9742

Deployment buckle



OUR
POS MATERIAL

DISPLAY MATERIAL



Ref: SDAN-DIS-6A-2018

Description:

- Faux cream leather
- Wood pattern details
- Logo+Movement on front part
- logo embossed on base
- 6 places

Mesures:

- L250xD305xH233



Ref: SDAN-DIS-12A-2018

Description:

- Faux cream leather
- Wood pattern details
- Logo+Movement on front part
- logo embossed on base
- 12 places

Mesures:

- L470xD305xH233



Ref: SDAN-DIS-5

Description:

- Faux cream leather
- Wood pattern details
- Logo+Movement on front part
- logo embossed on base
- 6 places

Mesures:

- L289xD285xH290

DISPLAY MATERIAL



Ref: SDAN-DIS-6

Description:

- Faux Cream Leather
- Wood Pattern details
- Logo + Movement on front part Logo
- Embossed on base
- 6 -8 places

Mesures:

- L440xD351xH352



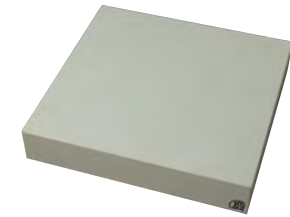
Ref: SDAN-DIS-8D

Description:

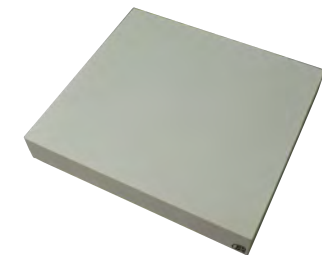
- Faux Cream Leather
- Wood Pattern details
- Logo + Movement on front part Logo
- Embossed on base
- 8-10 places

Mesures:

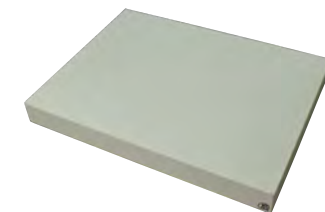
- L700xD302xH313



Ref: AN-BA-270x280x5ORI



Ref: AN-BA-310x340x5ORI



Ref: AN-BA-370x490x5ORI

BOXES



Ref: AN-STG-09+SI+OI

Description:

- For contemporary Collection
- Faux grey leather material (outside)
- Faux cream leather (inside)
- Grey box
- Microfibre cleaning cloth with logo
- International Warranty
- Operating Instructions

Mesures:

- 183x168x115



Ref: AN-STL-09+SI+OI

Description:

- For O.H.M. & Limited Edition Only
- Lacquered wood & Faux leather material (outside)
- Faux cream leather (inside)
- Brown box
- Microfibre cleaning cloth with logo
- International Warranty
- Certificate of Authenticity
- Operating Instructions

Mesures:

- 183x168x115

ACCESSORIES



Ref: SCAN-BS21



Ref: MIC-POU



Ref: AN-TR-270x370x020



Ref:AN-VSC-12



Ref: SDUH050x047x030-14-
AN+AN-CROL



Ref: SDUH050x047x047-14-
AN+AN-CRVL



Ref: AL-170x40x100

ACCESSORIES



Ref: AN-M03-LED

Description:

- 3 Places
- Lacquered wood and faux leather material (outside)
- Faux cream leather (inside)
- Red Box

Mesures:

- 191x290x033



Ref: AN-M03-COLL

Description:

- 3 Places
- Lacquered wood and faux leather material (outside)
- Faux cream leather (inside)
- Red Box

Mesures:

- 160x211x084



ARMAND NICOLET
TRAMELAN

NICOLET SA
Rue de la Gare 7, 2720 Tramelan
Switzerland
www.armandnicolet.com